



R E F E R E N C E   S E R I E S

What if each drum in your drum set was engineered as an instrument unto itself. Each tom designed to respond perfectly within the confines of its respective frequency without compromise over any other area of your kit. This is the mission behind Reference Series. A complete set of individually engineered, incredible sounding drums.

In 1999, Pearl began its most ambitious undertaking, The Masterworks Series, the world's first truly custom drums. Designed for the player by the player. Every aspect of the manufacturing process was custom made, from the number of wood plies, the wood selection, to the final finish. Over the last 5 years, through arduous listening tests, Masterworks has taught us a great deal about drums and what makes the perfect shell. So forget what you think you know about drums and take a close look at Reference Series, the most acoustically advanced drums in the world.

To fully understand the Reference Series you must understand that the desired tonal characteristics of a 10" tom are completely different than that of a 22" bass drum. Thus to use the same material in both drums would result in a compromise. Reference Series drums use a combination of task specific bearing edges and 3 time proven woods,

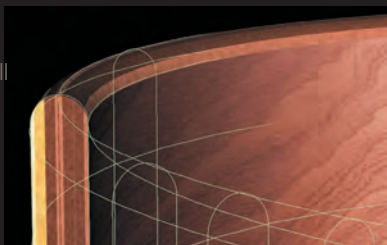
Birch, Maple, and African Mahogany.

Using Maple as a sole material has long been the traditional choice for shells and for good reason. Maple provides smooth, well balanced tone that is perfect for a 12" tom. Subsequently, all Reference Series 12" toms are composed of 6 plies of Maple. The only single wood shell in the series. Our 10" and 8" toms receive 4 plies of Maple with 2 inner plies of Birch for cut and attack. And for maximum response, all 13" and smaller toms have a rounded 45° bearing edge.

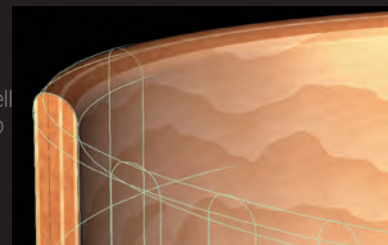
Beginning with our 13" tom and larger, Mahogany is added to the inner plies to increase the lower frequencies and accentuate the warmth of the Maple. The 14" toms and larger begin using our fully rounded bearing edge for even more shell contact. Our 18" and 20" bass drums use 4 inner plies of Mahogany with 2 outer plies of Maple. As the size of the bass drums increase, so does the amount of Mahogany. Our 22" and 24" bass drums incorporate an amazing 6 inner plies of Mahogany surrounded by 2 outer plies of Maple for the ultimate in solid responsive bass frequencies.

With Reference Series, it's not about compromise, it's about every drum in your kit performing at its optimal capacity.

The fully rounded bearing edge provides maximum shell contact for a boost in mid to low range frequencies. This edge is perfect for 14" toms to 24" bass drums.



The rounded 45° bearing edge provides a more focused area for head to shell contact for a boost in mid to higher range frequencies. This edge is perfect for 13" toms to 8" toms.







1365S  
13"x 6.5"



1450S  
14"x 5"



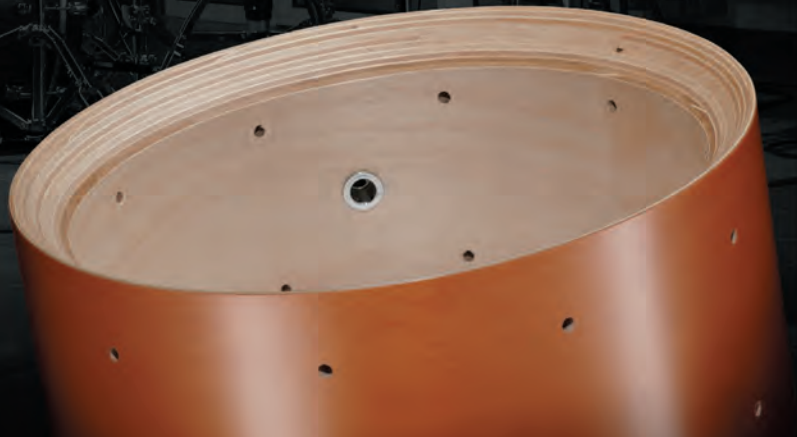
1465S  
14"x 6.5"

If Reference Series has engineered each tom to function at the highest level possible, you can only imagine the research and development that went into Reference Series Snares. Each shell is composed of a blend of woods totalling an incredible 20 plies. This extra thick shell ensures that no energy is lost through shell vibration and all energy is focused on moving sound waves. The shell's bearing edge is a 45° to promote a focused contact area with the head for response and crack.

6 inner plies of Birch provides cut and attack while the outer 14 plies of Maple provide warmth and solid midrange punch.

Reference Series Snare drums are available in 3 different shell sizes, 14"x 5", 14"x 6.5" and 13"x 6.5" to suit individual preferences and tastes. The heart and soul of your kit is your snare drum and the Reference Series Snare Drums shine through loud and clear.

A 45° bearing edge takes advantage of all 20 plies that Reference Series Snare Drums have to offer. 6 inner plies of Birch surrounded by 14 outer plies of Maple. Simply amazing volume.



The snare tension knob features a locking mechanism to maintain snare tension at all times. Simply depress the button and turn the knob simultaneously.



The strainer lever features a Positive Lock system that while in the On position removes the possibility of accidentally turning the snares off without depressing a button on the lever.





- 16" x 15" tom**  
4 inner plies Mahogany  
2 outer plies Maple  
Rounded 45° Bearing Edge
- 14" x 11" tom**  
2 inner plies Mahogany  
4 outer plies Maple  
Rounded 45° Bearing Edge
- 10" x 8" tom**  
2 inner plies Birch  
2 outer plies Maple  
4 outer plies Maple  
Rounded 45° Bearing Edge
- 12" x 9" tom**  
6 plies Maple  
Rounded 45° Bearing Edge
- 13" x 10" tom**  
2 inner plies Mahogany  
4 outer plies Maple  
Rounded 45° Bearing Edge
- 14" x 14" tom**  
2 inner plies Mahogany  
4 outer plies Maple  
Fully Rounded Bearing Edge
- 16" x 16" tom**  
2 inner plies Mahogany  
4 outer plies Maple  
Fully Rounded Bearing Edge
- 18" x 16" tom**  
6 inner plies Mahogany  
2 outer plies Maple  
Fully Rounded Bearing Edge
- 14" x 5" Snaredrum**  
6 inner plies Birch  
14 outer plies Maple  
45° Bearing Edge
- 22" x 18" Bass Drums**  
6 inner plies Mahogany  
2 outer plies Maple  
Fully Rounded Bearing Edge



OptiMount tom holders provide the ultimate in tom stability with minimal damping by cradling the tom securely by the tension rods for maximum resonance and optimal positioning.



Reference Series floor toms utilize our LB-200 bridge leg brackets that attach to the shell via molded rubber gaskets for minimal shell contact. Positioning is secured with our ergonomic WingLoc wing nuts.







Our BRL -300 swivel lugs incorporate Stainless Steel Tension rods with our CW-300 claws for uniform tuning and provide superior head seating.



Reference Snares feature Die Cast Hoops, stainless steel tension rods and our BRL-55 swivel lugs for perfect head seating and the ultimate in tuning integrity.





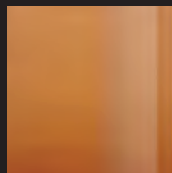
"From many years of dedication, craftsmanship, hard work and experience comes perfection. Pearl has given us a new level of perfection in The Reference Series Drums." - Omar Hakim

"Kits using only one wood have to be a compromise. The Reference Series are definitely the best drums out there." - Morgan Rose

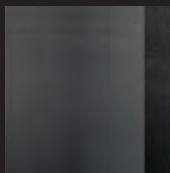


"The new Reference Series is one of the greatest drum sets I've ever played in my life. My hat's off to all that put this together." - Dennis Chambers

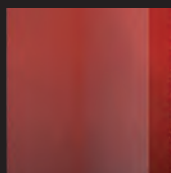
Reference Series is available in 6 high gloss finishes.



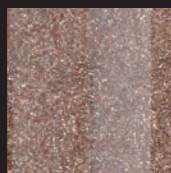
#142  
Root Beer Fade



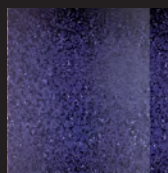
#143  
Twilight Fade



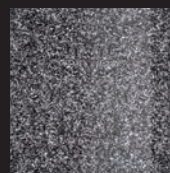
#155  
Scarlet Fade



#192  
Copperfire Sparkle



#193  
Purple Craze



#194  
Granite Sparkle

*Pearl*

www.pearldrums.com

REF 1.05